



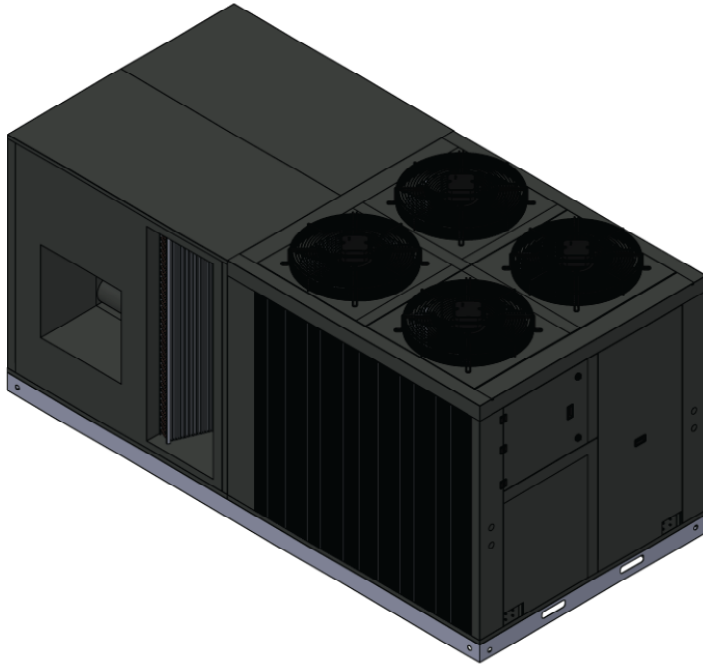
Air Conditioning & Heating

GXPk-DG

COSTERA SERIES

AIR COOLED COMMERCIAL PACKAGED
ROOFTOP AIR CONDITIONER

60 TONs



CONTENTS

Nomenclature2
 Product Specifications3
 Performance Data4
 Blower Data5
 Unit Dimensions6
 Wiring Diagram8

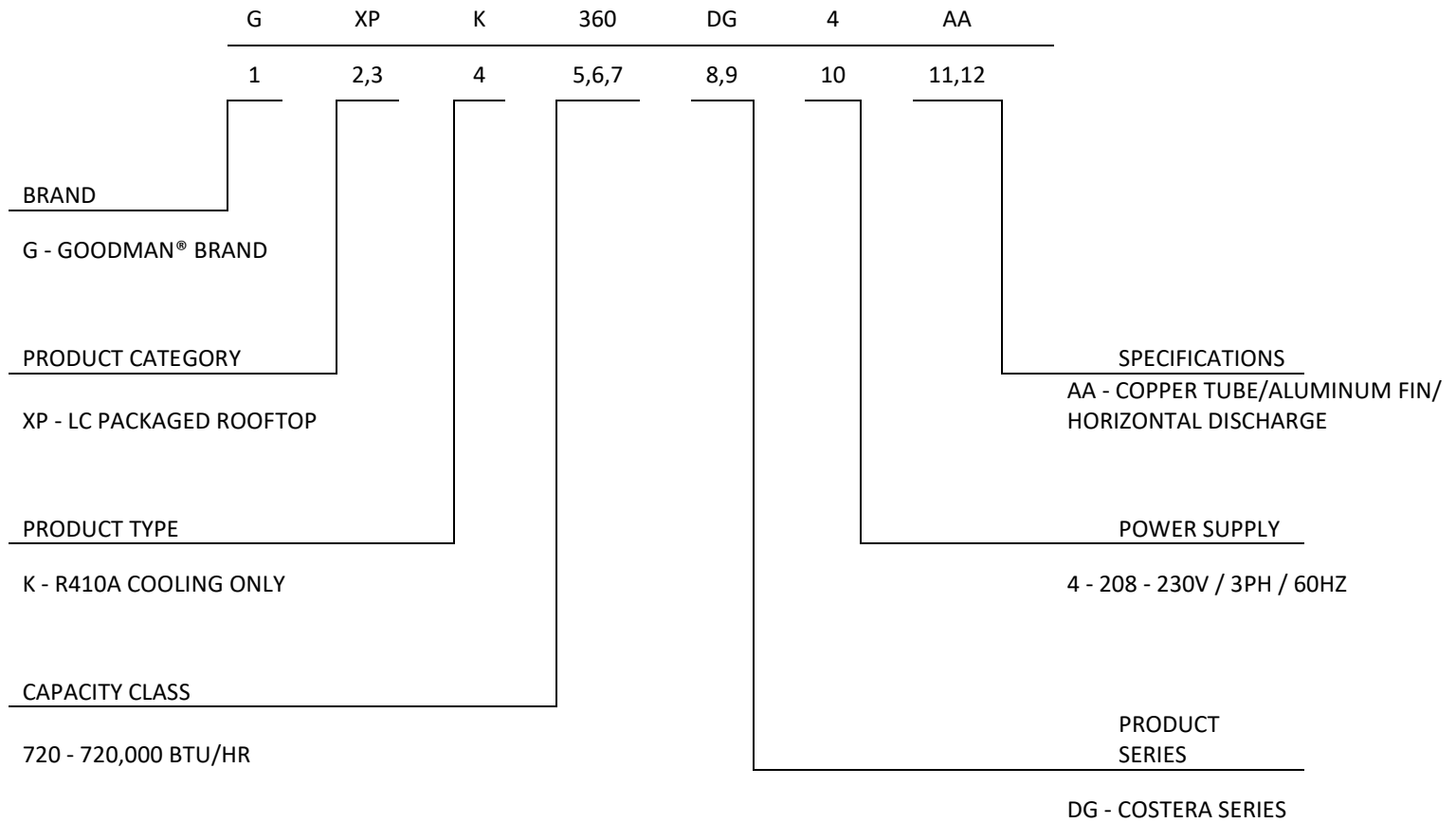
Product Features

- Energy Efficient Scroll Compressors
- Evaporator and Condenser Heat Exchanger are made of copper tubes and aluminum fins.
- Cabinet is made of Galvanized Steel Sheet and painted using power coat technique.
- Horizontal Discharge and Return
- Easy-access panel to compressors
- Installed with Filter Driers
- High and Low Pressure Switches
- Belt Driven Centrifugal Fan Blower system
- Fully charged system

COSTERA Series Features

- Unit base is supported by reinforced iron metal base with forklift openings
- Unit cabinet is coated with Modine Luvata Corrosion Resistant spray for extra protection to prevent rusting
- Evaporator and Condenser Heat Exchanger are applied with additional Modine Luvata Corrosion Resistant Spray for additional protection from corrosion due to coastal conditions
- Stainless Steel rivet-nut machine-threaded hex head screw-fixed service panel

NOMENCLATURE



PRODUCT SPECIFICATIONS

MODEL	GXP720DG4AA
GENERAL DATA	
Cooling Capacity (Btu/hr)	720,000
Cooling Tons	60
EER ^[1]	11.8
EVAPORATOR FAN MOTOR	
Drive	Pulley
Number of Fans	1
Rated Air Flow ^[1] (CFM)	24,000
Blower (DxW)	25" x 25"
Number of Motors	1
Current (A)	47.0
Power (HP)	20
RPM	1770
EVAPORATOR HEAT EXCHANGER	
Type	Copper Tube / Aluminum Fins
Number of Rows	4
Fins per Inch	12
CONDENSER FAN MOTOR	
Number of Fans	4
Type	Axial
Number of Motors	4
Current (A)	6.37
Power (HP)	1918
RPM	1057
Fan Diameter (mm)	800
CONDENSER COIL	
Type	Copper Tube / Aluminum Fins
Number of Rows	4
Fins per Inch	13
COMPRESSOR	
Refrigerant	R410A
Quantity	4
Type	Scroll
RLA ^[2]	62.1
LRA ^[3]	340.0
ELECTRICAL DATA	
Power supply (V / Ph / Hz)	208-230 / 3 / 60
Operating Current ^[1] (A)	321
Unit Total Amperage ^[1] (A)	321
Minimum Circuit Ampacity (A)	337
Max. Overload Protection (A)	400
NET WEIGHT (kg)	2641
GROSS WEIGHT (kg)	2660

NOTES:

1. Data based on AHRI 360 Standard
2. Rated Load Amp (RLA) corresponds to a single compressor
3. Locked Rotor Amps (LRA) corresponds to a single compressor
4. The information provided in the table may change without prior notice

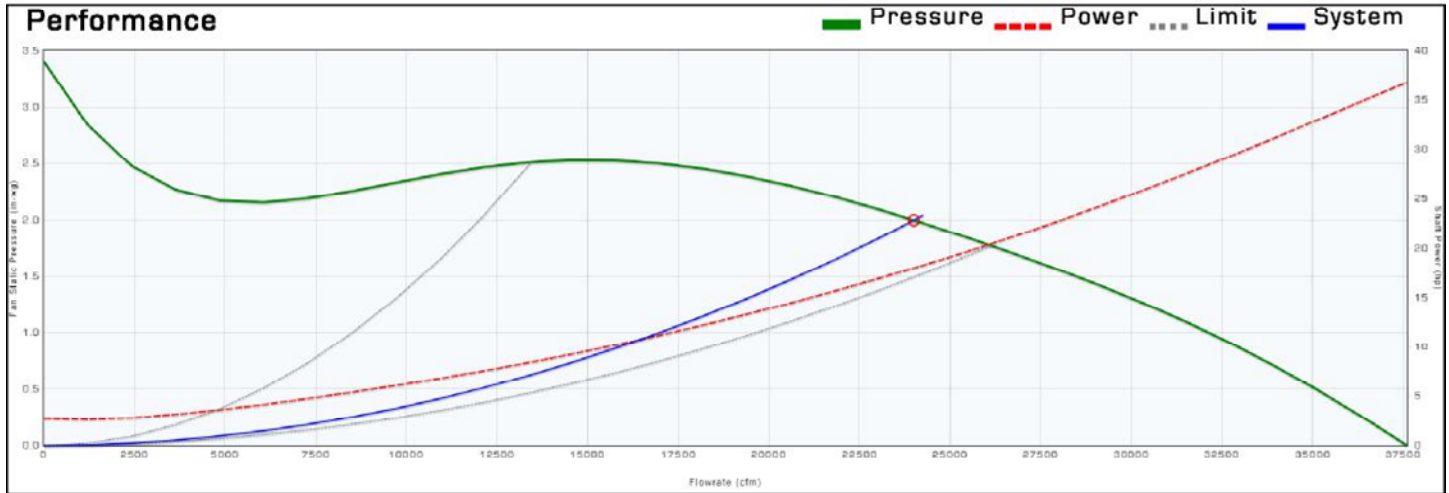
PERFORMANCE TABLE

Airflow (CFM)	Ent DB (°F)	Ambient Temperature (°F)																	
		85						95						105					
		Wet Bulb Inlet (°F)																	
		61		67		73		61		67		73		61		67		73	
MBh	SHC	MBh	SHC	MBh	SHC	MBh	SHC	MBh	SHC	MBh	SHC	MBh	SHC	MBh	SHC	MBh	SHC	MBh	SHC
19200	75	434	383	672	360	963	344	408	360	632	338	896	320	383	338	594	318	833	298
	80	471	471	672	439	973	426	443	443	632	413	905	396	416	416	594	388	842	368
	85	547	547	676	517	973	500	514	514	635	486	905	465	483	483	597	457	842	432
	90	623	623	681	599	973	582	586	586	640	563	905	541	550	550	602	529	842	503
21600	75	472	422	731	394	1048	373	444	397	687	370	975	347	417	373	646	348	906	323
	80	516	516	730	480	1047	460	485	485	686	451	974	428	456	456	645	424	906	398
	85	600	600	734	568	1058	551	564	564	690	534	984	512	530	530	649	502	915	477
	90	683	683	741	658	1048	634	642	642	697	619	975	590	603	603	655	581	906	548
24000	75	505	457	786	425	1128	401	475	430	739	400	1049	373	446	404	695	376	976	347
	80	560	560	785	520	1128	429	526	526	738	489	1049	399	495	495	694	459	976	371
	85	651	651	789	617	1128	591	612	612	742	580	1049	550	575	575	697	545	976	511
	90	742	742	800	716	1129	686	697	697	752	673	1050	638	656	656	707	633	976	593
26400	75	539	492	838	455	1020	355	507	462	788	428	949	330	476	435	740	402	882	307
	80	603	603	837	558	1018	458	567	567	787	525	947	426	533	533	740	493	880	396
	85	701	701	841	663	1018	562	659	659	791	623	947	523	619	619	743	586	880	486
	90	798	798	854	772	1018	665	750	750	803	726	947	618	705	705	755	682	880	575
28800	75	572	526	887	484	1077	375	538	494	834	455	1002	349	505	465	784	428	931	324
	80	643	643	886	595	1076	485	604	604	833	559	1001	451	568	568	783	526	931	419
	85	748	748	891	708	1077	597	703	703	838	666	1002	555	661	661	787	626	931	516
	90	852	852	909	827	1077	708	801	801	854	777	1002	658	753	753	803	731	931	612
Airflow (CFM)	Ent DB (°F)	Ambient Temperature (°F)																	
		115						120						125					
		Wet Bulb Inlet (°F)																	
		61		67		73		61		67		73		61		67		73	
MBh	SHC	MBh	SHC	MBh	SHC	MBh	SHC	MBh	SHC	MBh	SHC	MBh	SHC	MBh	SHC	MBh	SHC	MBh	SHC
19200	75	360	318	558	299	775	339	339	305	525	284	720	329	319	293	493	270	670	319
	80	391	391	558	365	783	418	368	376	525	346	728	405	346	361	493	329	677	393
	85	454	454	561	429	783	501	427	436	528	408	728	486	401	419	496	388	677	471
	90	517	517	566	498	783	577	486	497	532	473	728	560	457	477	500	449	677	543
21600	75	392	351	607	327	843	371	369	336	571	311	784	360	346	323	536	295	729	349
	80	429	429	606	399	842	455	403	411	570	379	783	441	379	395	536	360	728	428
	85	498	498	610	472	851	544	468	478	573	448	791	528	440	459	539	426	736	512
	90	567	567	615	547	843	632	533	545	579	519	784	613	501	523	544	493	729	595
24000	75	419	380	653	353	907	394	394	364	614	335	844	382	371	350	577	319	785	371
	80	465	465	652	432	907	491	437	447	613	410	844	476	411	429	576	390	785	462
	85	541	541	655	512	907	588	508	519	616	487	844	570	478	498	579	463	785	553
	90	616	616	664	595	908	685	579	592	625	565	845	664	545	568	587	537	785	645
26400	75	448	409	696	378	820	420	421	392	654	359	763	407	396	377	615	341	710	395
	80	501	501	695	463	819	529	471	481	653	440	762	513	443	462	614	418	708	498
	85	582	582	699	551	819	630	547	559	657	523	762	611	514	537	617	497	708	593
	90	663	663	709	641	819	735	623	636	667	609	762	713	586	611	627	579	708	692
28800	75	475	437	737	402	866	444	447	419	693	382	806	431	420	403	651	363	749	418
	80	534	534	736	494	865	557	502	513	692	469	805	540	472	492	650	446	749	524
	85	621	621	740	588	866	671	584	596	696	559	806	651	549	573	654	531	749	631
	90	708	708	755	687	866	784	665	679	710	653	806	760	625	652	667	620	749	738

Notes: ¹ Data DB corresponding to a certain condition. The capacities described do not take into account the heat generated by the indoor fan.
² MBh = Total Gross Capacity. ³ SHC = Sensible Heat Capacity.

BLOWER PERFORMANCE DATA

Model A25-25H	Flow 24000 cfm	Pressure 2.00 in-wg	Temperature 70 °F	Altitude 0 ft	Density 0.075 lb/ft ³	Q Derate 0 cfm	P Derate 0.00 in-wg	Vav Set Point 0.00 in-wg
Fan Tag	Flow 24000 cfm	Pressure 2.00 in-wg	Power 18.03 hp	Static Efficiency 42.0 %	Total Efficiency 58.7 %	Speed 608 rpm	Outlet Velocity 3577 fpm	Efficiency Rating FEG75
	Impeller Dia 25.0 in	Outlet Area 6.71 ft ²	Max. Speed 790 rpm	AMCA Class 9	Drive Belt Drive	Blades 37	P Volume 46.93 ft ³	TurnDown 100 %

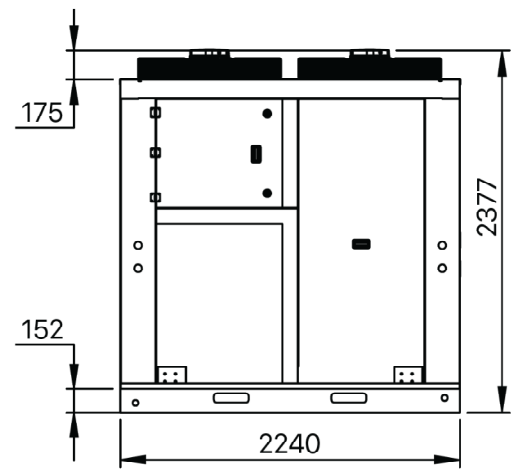
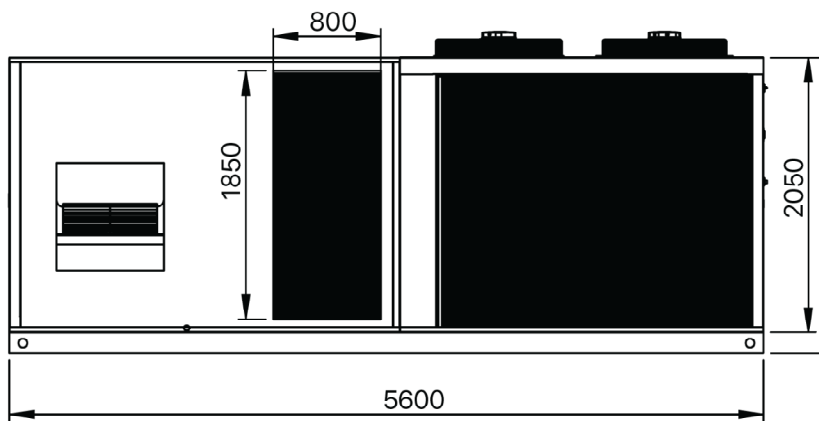
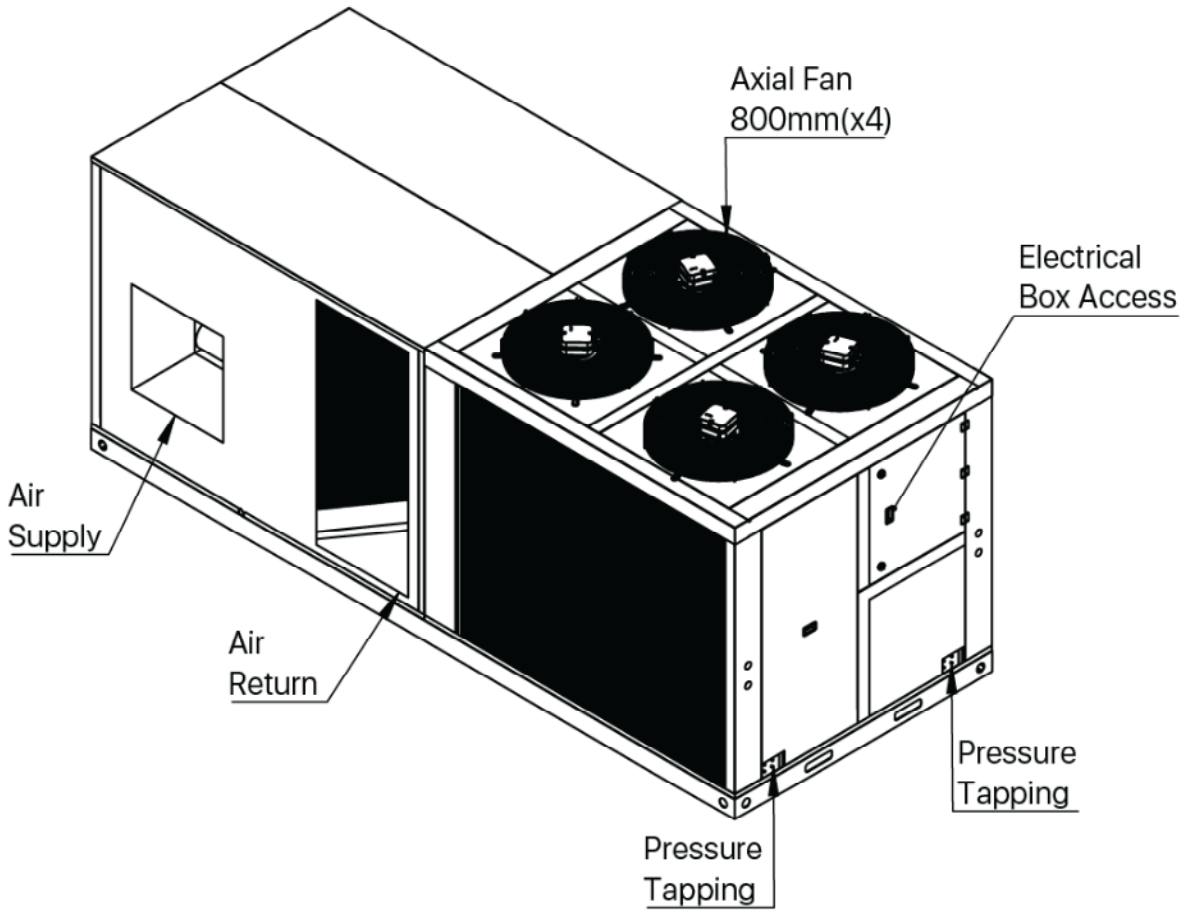


Sound(Lwi/Lwo)	63	125	250	500	1000	2000	4000	8000	Lw	LwA
	93/93	93/94	92/93	94/96	92/92	91/91	88/86	83/81	101/102	98/98

Notes: Airflow performance data are obtained in accordance with AMCA 210-07. Installed performance will vary depending on extent of cabinet geometry

Sound data are estimated from industry experience for the type of product selected. Data should be used for comparison purposes only and do not represent installed values.

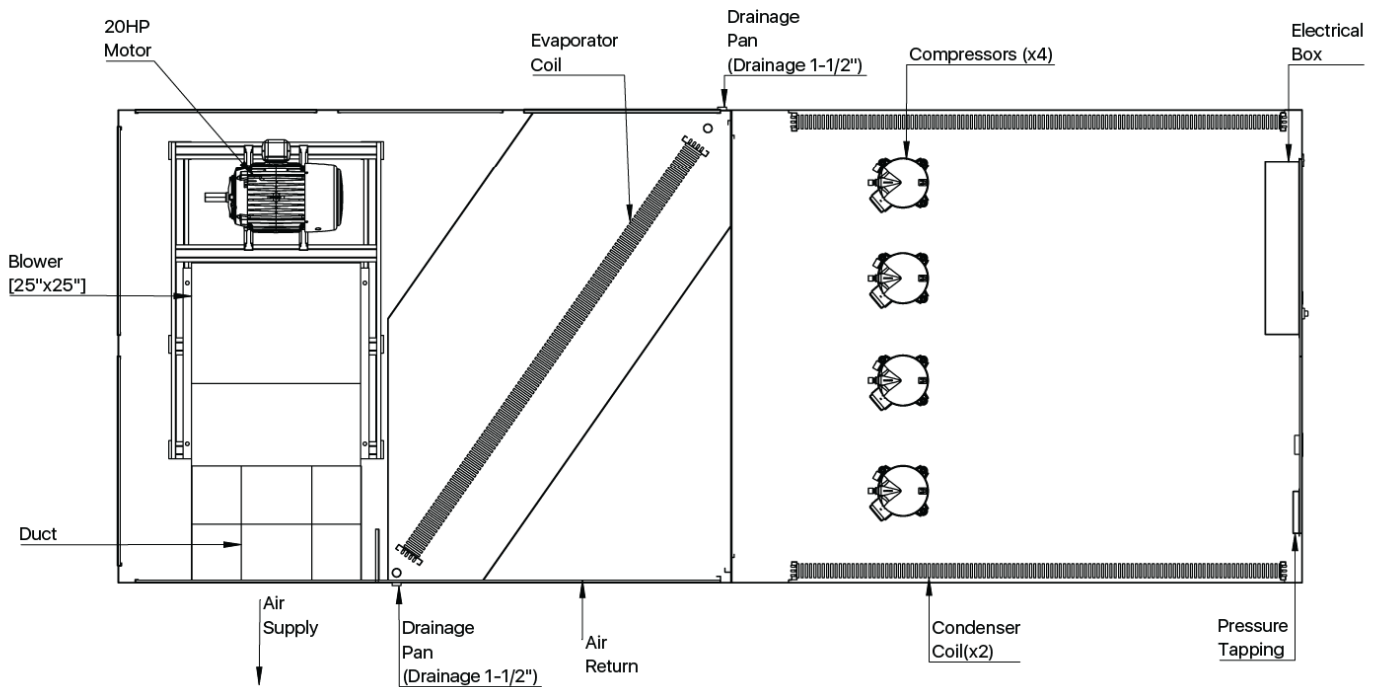
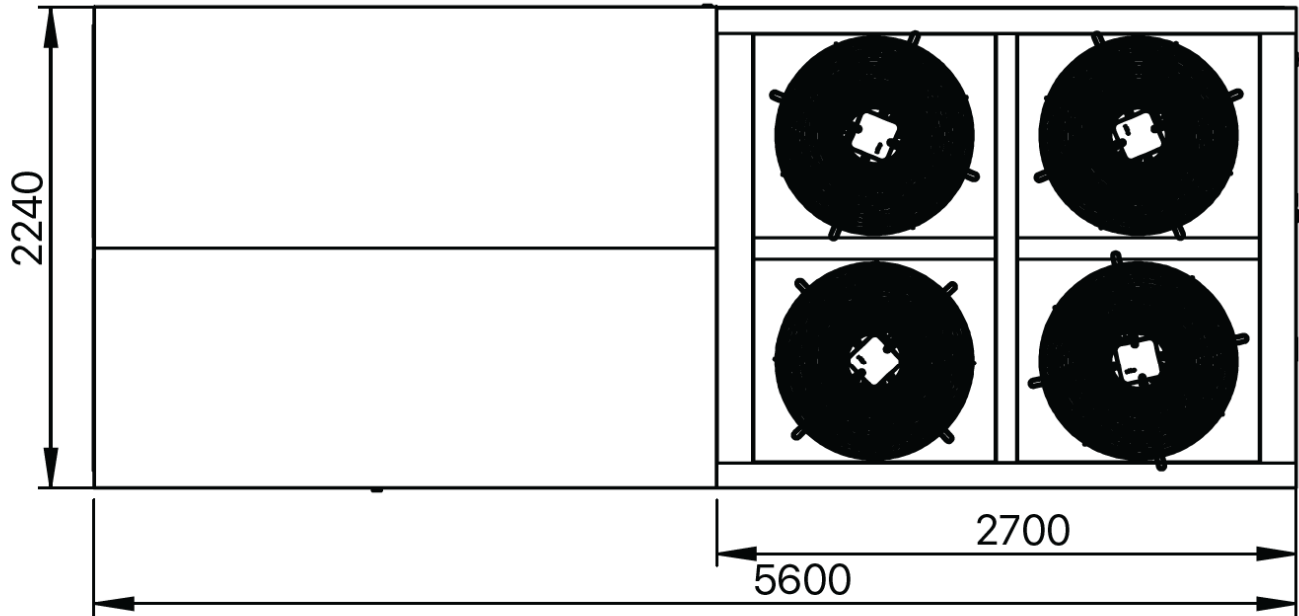
UNIT DIMENSION



Note: All measurements are in millimeters (mm).

UNIT DIMENSION

TOP VIEW

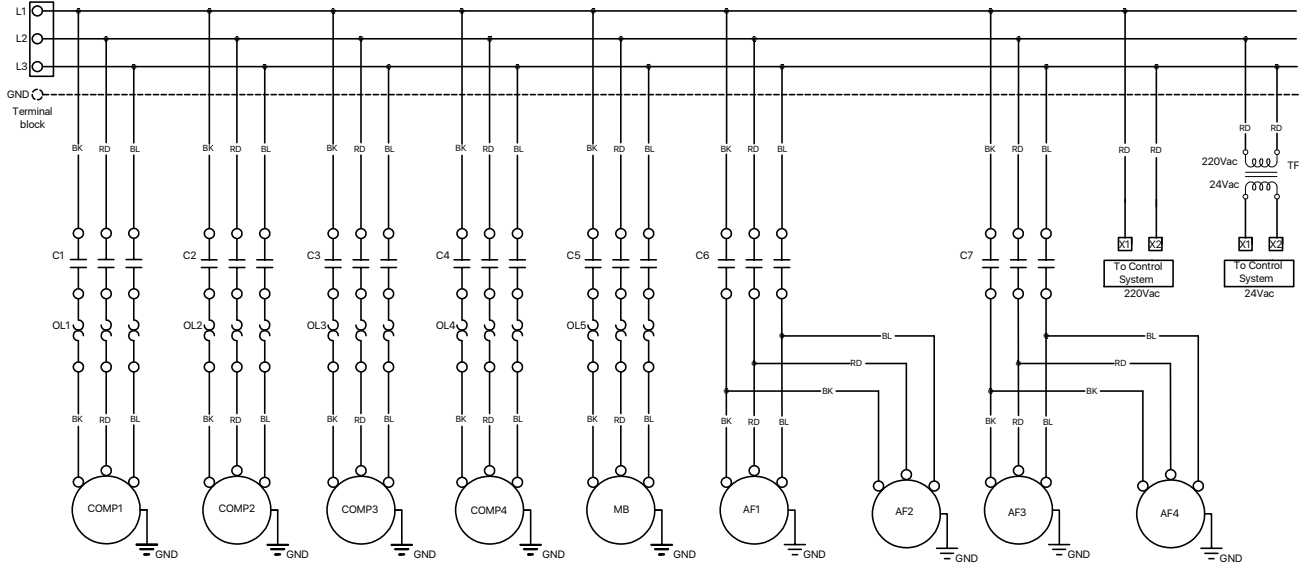


Note: All measurements are in millimeters (mm).

WIRING DIAGRAM

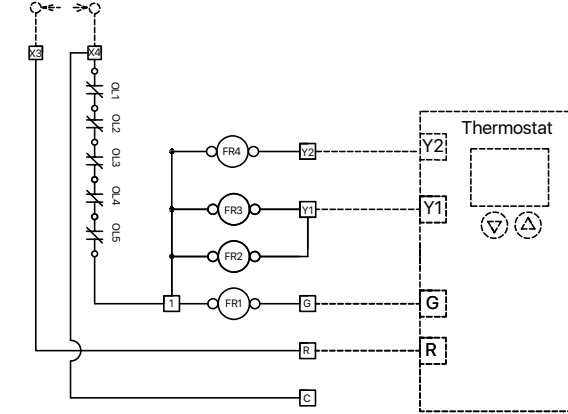
208-230V/3ph/60Hz

208-230V/3ph/60Hz



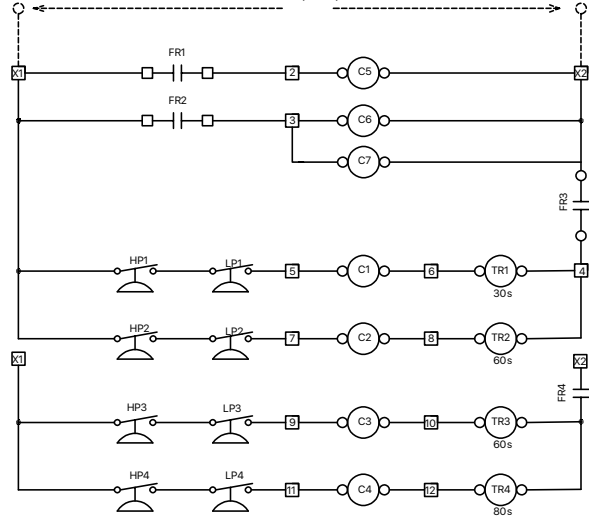
CONTROL

24Vac/1PH/60Hz



Use points C & R to power thermostats that require external 24Vac.

220Vac/1PH/60Hz



WARNING

High Voltage: Disconnect all supply source before manipulating this unit. Multiple energy sources can be present. Not doing so can cause property damage, personal injury or death.

- MB: Compressor
- MV: Blower Motor
- L: Condenser Motor
- FR: AC Supply Lines
- G: Auxiliary Relay
- Y1: Fan Signal
- Y2: Condenser Signal Stage 1
- R: Condenser Signal Stage 2
- C: Common 24Vac Lines
- C: Auxiliary 24Vac Lines

- HP: High Pressure Switch
- LP: Low Pressure Switch
- TR: Timer
- C1-C9: Contactor
- OL: Thermal Relay
- GND: Ground
- : Factory Wiring
- - -: Field Wiring

Our continuing commitment to quality products may mean a change in specifications without prior notice.
©2023 Daikin Comfort Technologies Manufacturing LP • Houston, Texas • 10/23