



Energy By Design

Harnessing solar power with stunning shade structures in commercial, public and community spaces.

Civic centres and public spaces

Our architectural solar structures suit a range of public uses including covered walkways, amphitheatre covers, sporting ground facilities, solar-powered charging stations and more.



Civic - Public pool shade structure



Civic - Public playgrounds

Project: Wakefield House
Client: City of Onkaparinga



Civic - Community buildings

CONTACT US

P 08 8185 7060 E info@pvdynamics.com.au
pvdynamics.com.au





Schools and universities

Power your campus while protecting staff and students from the sun and weather. Our custom and modular solar shade structures can be used as sheltered walkways, solar-powered study zones, covered community hubs and more.

Education - School bus stop



Education - Modular covered outdoor



Education - Custom covered outdoor learning area

CONTACT US

P 08 8185 7060 E info@pvdynamics.com.au
pvdynamics.com.au





Residential - Double carport 8.5Kw

Make power at home

Rooftop solar can ruin the sleek look of your architecturally designed home and cause unnecessary complications with your build. Our freestanding solar structures harness the power of the sun and deliver a stylish environmental statement at your home.



Residential - Single carport 5.67Kw



Residential - Outdoor BBQ pergola 8.5Kw

CONTACT US

P 08 8185 7060 E info@pvdynamics.com.au
pvdynamics.com.au



Large-scale Commercial

From shopping centres to airports to universities and more, our large-scale solar car parks provide shade and weather protection for your customers while generating renewable energy.

Our system is engineered for the long term, (25 years plus) so you can benefit from multiple solar upgrade cycles by reducing its true cost for years to come.

Our slide-in mechanism makes maintaining your solar panels safe and simple with less downtime.

Our structures are cyclone rated to meet the requirements for wind region C, which includes the north coast of Australia.



Wakefield House Positive Ageing Centre



Client: Andrew Powell Properties

32 West Thebarton 26.7Kw



Civic - Electric vehicle charger

CONTACT US

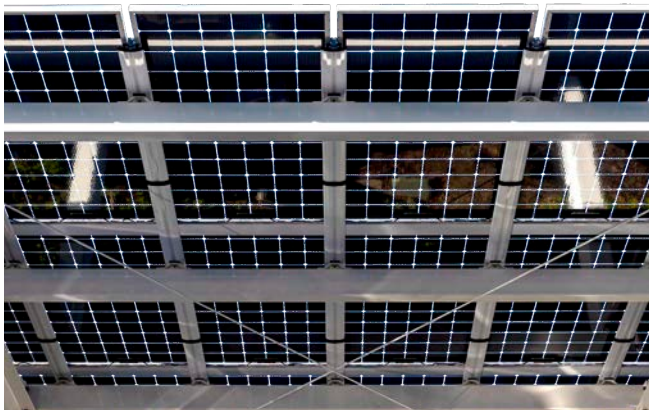
P 08 8185 7060 E info@pvdynamics.com.au
pvdynamics.com.au



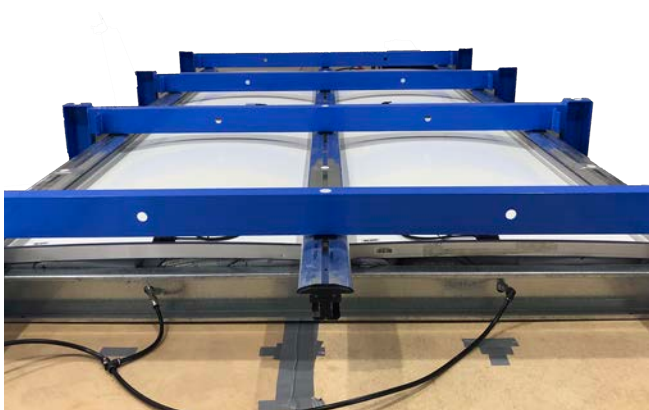
With a PVDynamics solar integrated structure, you can deliver a stylish environmental statement and add value to your property. Our architecturally designed system creates structures that are waterproof, easy to maintain, and safe to build while being functional and beautiful.



Integrated gutter



Integrated cable management



PVDynamics system tested to region C

Waterproof

Framed solar panels aren't designed to be waterproof. Our system solves this problem by using multiple barriers to create a waterproof structure without silicone or double sided tape, which can fail in many ways.

Water management

With waterproofing comes water management. Our structures include an innovative and integrated gutter system designed specifically for solar panels.

Cable management

Our solar structures include semi-integrated cable management. This creates an attractive cable-free look to the underside of the solar panels. And it's easy to maintain.

25-year engineering guarantee

Our structures come with a minimum 25-year engineering design guarantee. At PVDynamics, we make sure our products meet the Australian Standards or above. Our system has also passed rigorous testing for various weather conditions.

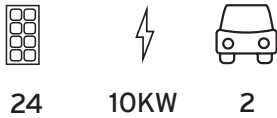
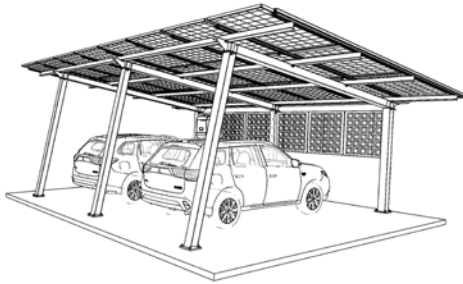
Cyclone rated

Our solar structures meet the engineering requirements for regions A and B, and for cyclonic wind region C. This covers most areas of Australia.

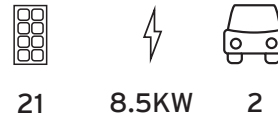
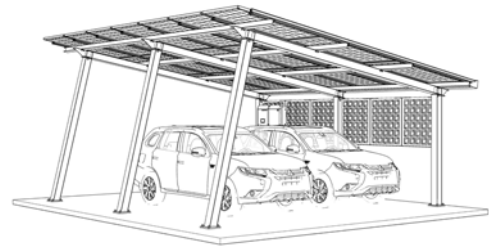
Australia made

The PVDynamics system is 100% Australian owned and made using mostly locally made components.

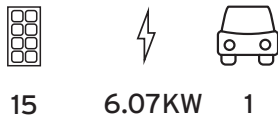
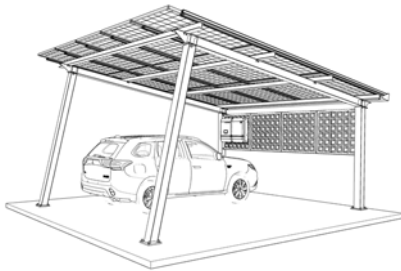
Solar Panel: LG Bifacial 405W



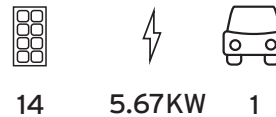
DC-01 Double carport
6360W x 8645L x 3750H
North or south facing



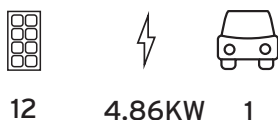
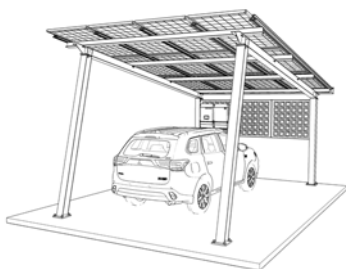
DC-02 Double carport
6360W x 7595L x 3750H
East or west facing



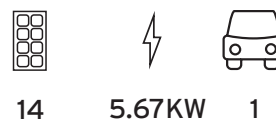
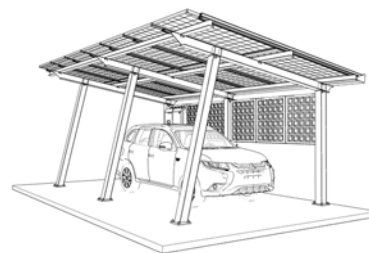
SWC-03 Single carport wide
6360W x 5470L x 3750H
North or south facing



SWC-04 Single carport wide
4715W x 7595L x 3400H
East or west facing



SC-05 Single Carport
6360W x 4405L x 3750H
North or south facing



SC-06 Single Carport
4195W x 7595L x 3400H
East or west facing



Wakefield House Positive Ageing Centre



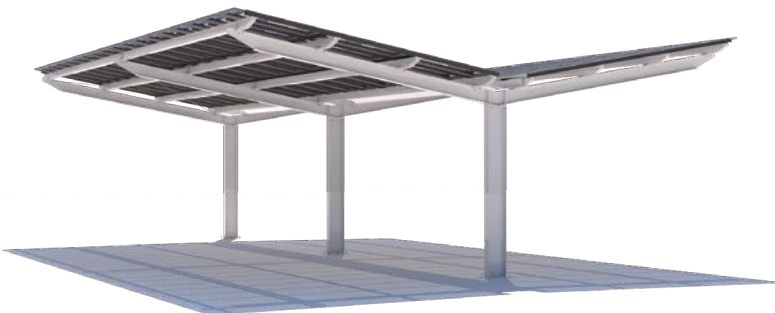
Single-sided parking

Our standard car park structures incorporate the PVDynamics 'Series 100' solar canopy system for fast and safe installation.

Each design is pre-engineered to fit a wide range of framed and frameless solar panels. Designed for flexibility, these structures will suit any layout for small or large scale public parking facilities

Weather rated

All configurations are engineered for regions A, B and C (includes cyclonic regions).



Gull wing double-sided parking

If our standard designs don't suit your needs, we can design a custom structure specifically for you.

Talk to us

Talk to us about developing a customised design to suit your project needs.

Our services include:

- A custom concept sketch to suit your site requirements
- 3D modelling, engineering and detailed working drawings to submit to council
- Full project costings and fabrication drawings

Custom design costs vary depending on your project scope.



Concept



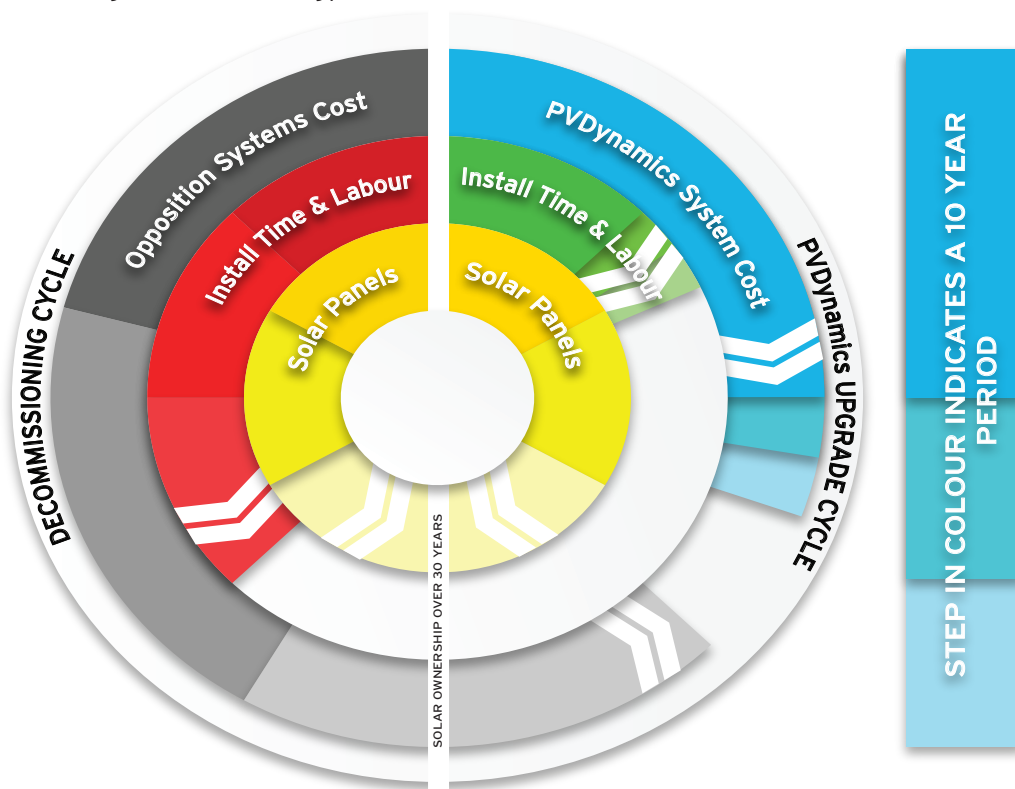
32 West Thebarton 26.7Kw

CONTACT US

P 08 8185 7060 E info@pvdynamics.com.au
pvdynamics.com.au

While other solar shade structures may seem less expensive in the short term, there may be hidden costs when it comes time to upgrade your solar panels. Solar systems are supposed to be long-lasting under the right conditions, yet panels regularly need to be repaired, removed or replaced with newer technology. The short-sighted design of some solar shade structures can make the process of replacing panels cost more than the original array, meaning you might need to decommission your system altogether.

The PVDynamics system is designed for upgrading so it's easier to replace your panels than decommission the whole system. Our patented rail system is flexible to fit a wide variety of solar panels, and our slide-in mechanism makes removing and replacing panels quick, easy, and relatively inexpensive. This means you can keep using your structure to create cost-saving renewable energy for decades to come.



PVDynamics systems costs

- Long engineering design life
- Adjustable to suit most panels
- Easy to maintain and upgrade panels
- Low upgrade costs for new panels
- Waterproof without silicone
- Discreet cable management

Opposition systems costs

- Low engineering design life
- Takes longer to decommission (silicone & double sided tape)
- Not easy to access cables
- Difficult to maintain
- No or expensive upgrade option

Opposition install time

- Long decommission time and reinstallation
- Increase labour cost over the years
- Loss of income during shut down period
- Inconvenience to your customers
- Loss of income

PVDynamics install time

- Fast slide-in panel design for install and uninstall
- Fast cable maintenance for replacing and maintenance
- Protects panels from damage by fixing from the underside of panels
- Replaceable weather seals
- Safe work environment

Solar Panels Costs

- Solar cost are similar
- PVDynamics system can be upgraded 2 to 3 times