



Submittal Data Sheet

4.5-Ton MSP Concealed Ducted Unit

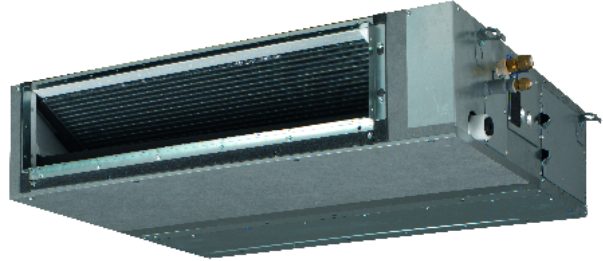
FXSQ54TAVJU

FEATURES

- Eleven capacity options from 5,800 Btu/h to 54,000 Btu/h
- External static pressure up to 0.54 in. w.g. (150 Pa)
- Low profile height of 9-5/16" (245 mm) for all models
- 5-speed DC fan motor with selectable Auto fan speed
- Auto airflow adjust feature
- Independently configurable auxiliary heat on/off temperature settings
- Factory rear-return, field convertible to bottom-return
- Integral condensate pump with up 25-5/16" (643 mm) of lift from the drain outlet
- Drain pan inspection port
- Standard Limited Warranty: 10-year limited parts warranty

BENEFITS

- Requires as little as 11-1/4" (285 mm) of clearance above the ceiling thanks to the low profile design.
- Auto fan speed control optimizes fan energy use by automatically adjusting the unit's fan speed as the room temperature approaches the set point.
- The drain pan inspection port simplifies maintenance by allowing for simple and easy inspection of the drain pan conditions.
- Designed for quiet operation, with sound levels as low as 28 dB(A).





Submittal Data Sheet
4.5-Ton MSP Concealed Ducted Unit
FXSQ54TAVJU

PERFORMANCE

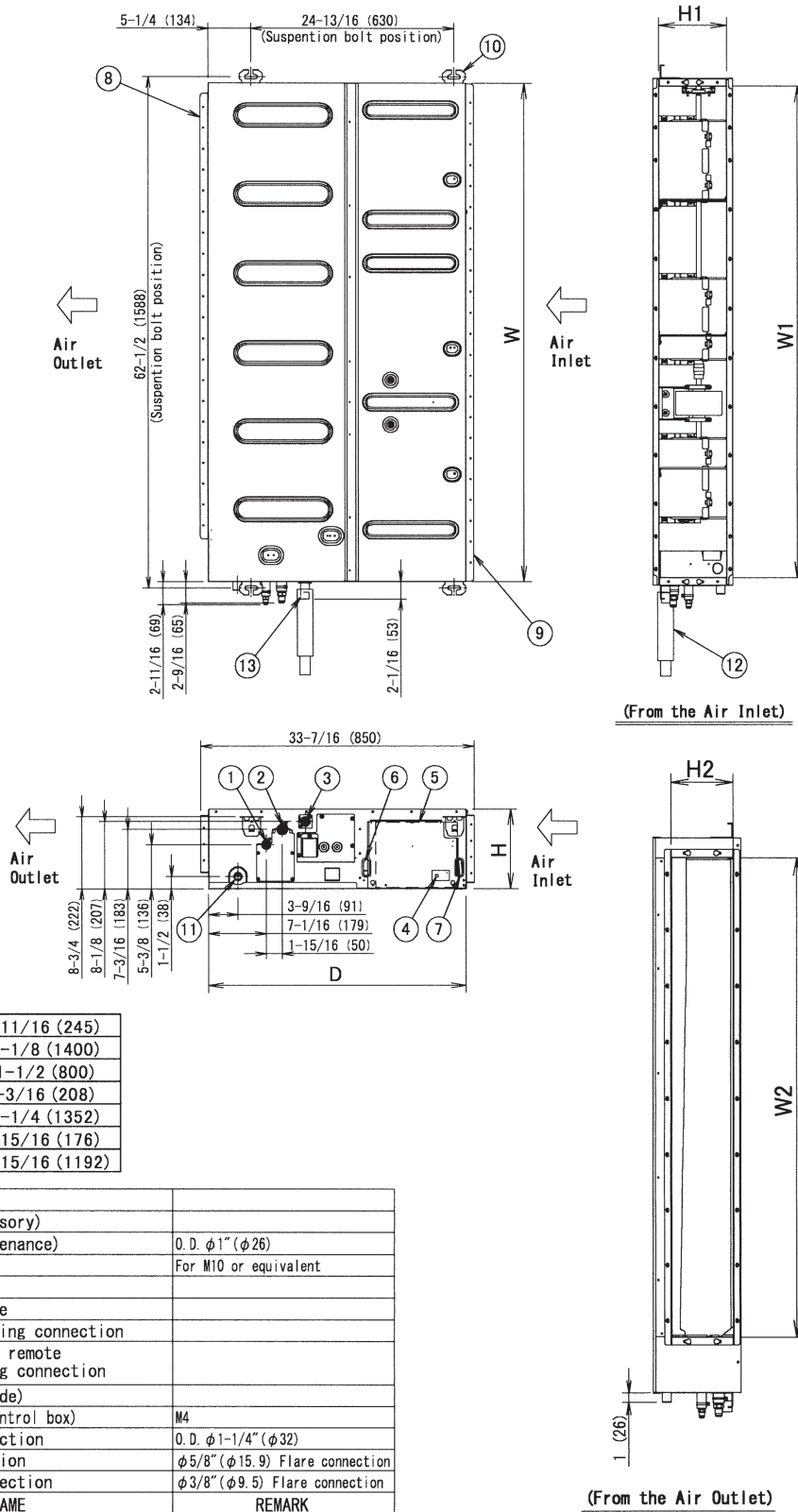
Indoor Unit Model No.	FXSQ54TAVJU	Indoor Unit Name:	4.5-Ton MSP Concealed Ducted Unit
Type:	Ducted	Rated Cooling Conditions:	Indoor (°F DB/WB): 80 / 67 Ambient (°F DB/WB): 95 / 75
Rated Cooling Capacity (Btu/hr):	54,000	Rated Heating Conditions:	Indoor (°F DB/WB): 70 / 60 Ambient (°F DB/WB): 47 / 43
Sensible Capacity (Btu/hr):	38,600	Rated Piping Length(ft):	
Cooling Input Power (kW):	0.411	Rated Height Separation (ft):	
Rated Heating Capacity (Btu/hr):	60,000		
Heating Input Power (kW):	0.41		

INDOOR UNIT DETAILS

Power Supply (V/Hz/Ph):	208/230 / 60 / 1	Airflow Rate (H/M/L) (CFM):	1377/1,183/989
Power Supply Connections:	L1, L2, G	Moisture Removal (Gal/hr):	
Min. Circuit Amps MCA (A):	3.3	Gas Pipe Connection (inch):	5/8
Max Overcurrent Protection (MOP) (A):	15	Liquid Pipe Connection (inch):	3/8
Dimensions (HxWxD) (in):	9-5/8 x 61 x 31-1/2	Condensate Connection (inch):	1
Net Weight (lb):	115	Sound Pressure (H/M/L) (dBA):	43/40/36
Ext. Static Pressure (Rated/Max) (inWg):	0.2 / 0.54	Sound Power Level (dBA):	71

Submittal Data Sheet
 4.5-Ton MSP Concealed Ducted Unit
 FXSQ54TAVJU

DIMENSIONAL DRAWING



Note: For additional dimensional data and clearance information, refer to Engineering Data

Daikin North America LLC, 5151 San Felipe, Suite 500, Houston, TX, 77056