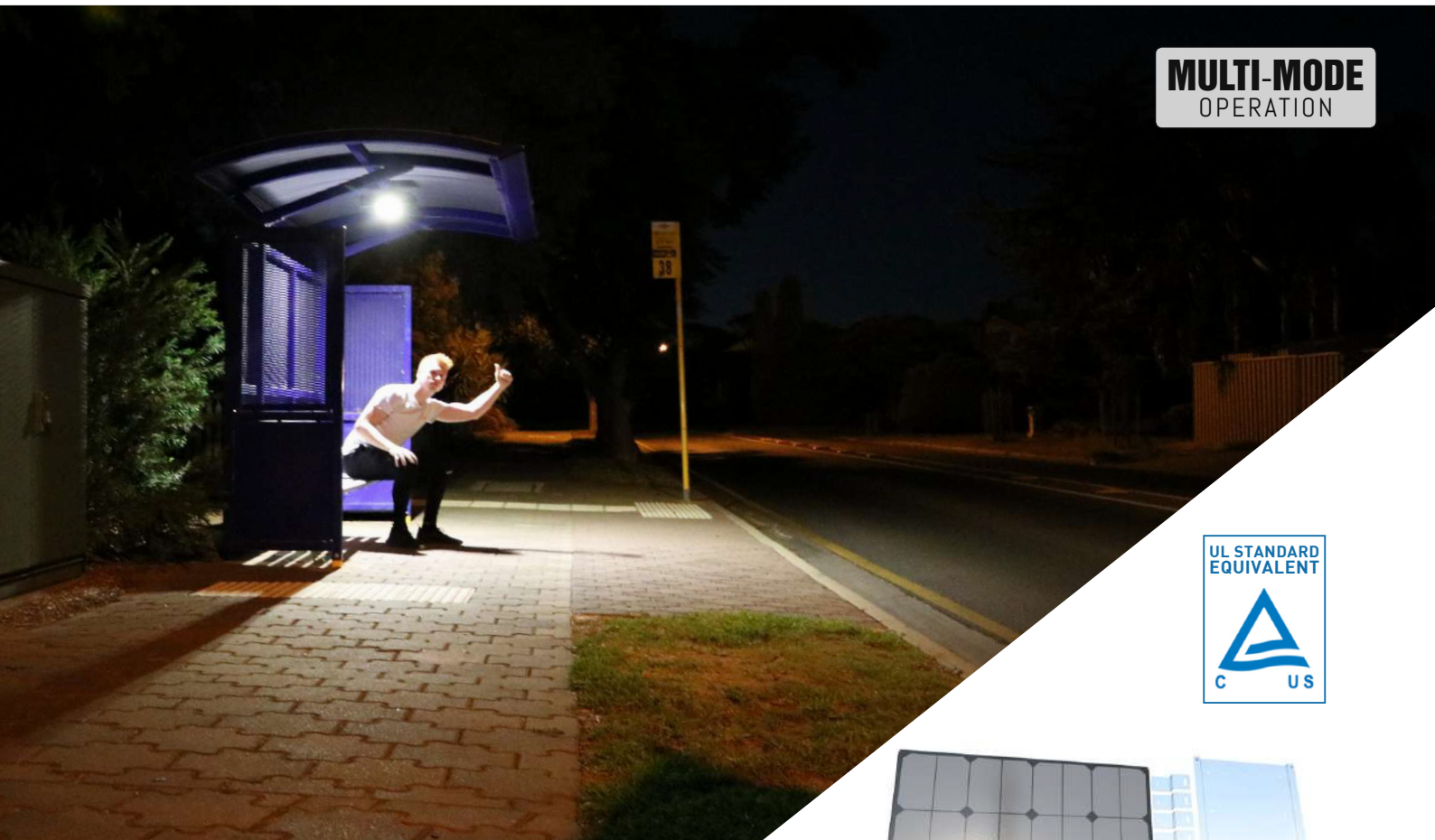


GFS-MSL **GEN 1**

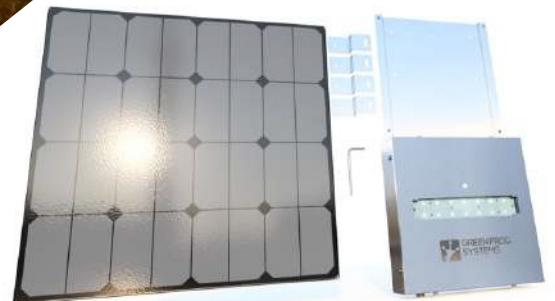
SOLAR SHELTER LIGHT



MULTI-MODE
OPERATION



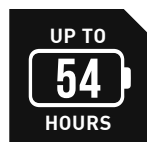
7W / 15W
187 lm/W (Max.)



The GFS-MSL is a modular, LED lighting system with split panel and light designed to illuminate under canopies, shelters and amenities using solar power. Built to withstand the toughest environments, the 316 grade stainless steel exterior shell and toughened glass lens is highly vandal resistant and can be used in numerous applications. It is easy to install with a compact integrated battery making it a cost saving lighting solution for numerous applications.

APPLICATIONS

- Bus Shelters
- BBQ Areas
- Recreational
- Canopies
- Amenities
- Sheds
- Playgrounds
- Toilet Blocks



GFS-MSL SOLAR SHELTER LIGHT

SPECIFICATIONS

MODEL GFS-MSL

OPERATING PROFILE / OPERATION MODES

Standard operation modes include :

1. All night mode - Operates at a constant all night level of illumination until dawn.
 2. Sensor mode - Detects movement and increases illumination up to 100% until no motion is detected for 30 seconds.
 3. Surprise mode - No light until motion is detected then turns on until no motion is detected for 30 seconds.
- Configurable TIMER settings for ON / OFF / DIM are available upon request.

LED

Type	CREE XP-G LED
Watts (Light Output)	15W (Boost Mode) / 7.5W (Normal Operation)
Lumens	187 lm/W (Max.)
CCT (Colour Temperature)	4000K (Standard) / 3000K (Optional)
Motion Sensor (PIR)	6m / 20" detection zone (360°) Activates for 30 seconds
Optics	T3 (Standard) 135° x 85° T5 (Optional) 110° x 135°

BATTERY

Autonomy	54 hours (4.5 nights)*
Battery Type / Capacity	LiFePo ₄ 12.8v 32Ah (409.6Wh)

SOLAR PANEL

Watts (p) / Type	65W N type monocrystalline with edgeless frame design
Efficiency	24%

UNIT

Material	Heavy duty IP65 316 grade stainless steel exterior shell and solar panel support frame
Product Dimensions	Panel assembly: L535 x W535 x H20 / L24.4" x W24.4" x H0.8" Fixture: 320mmL x 320mmW x 80mmH / 12.6"L x 12.6"W x 3.1"H
Package Dimensions	Boxed panel: L620 x W620 x H100 / L24.4" x W24.4" x H4" Boxed fixture: L400 x W400 x H120 / L15.7" x W15.7" x H4.7"
Package Weight	Complete unit: 19.5 kg / 43 lb
Sail Area / EPA	0.1146 m ² / 1.2333 FT ²

ENVIRONMENTAL

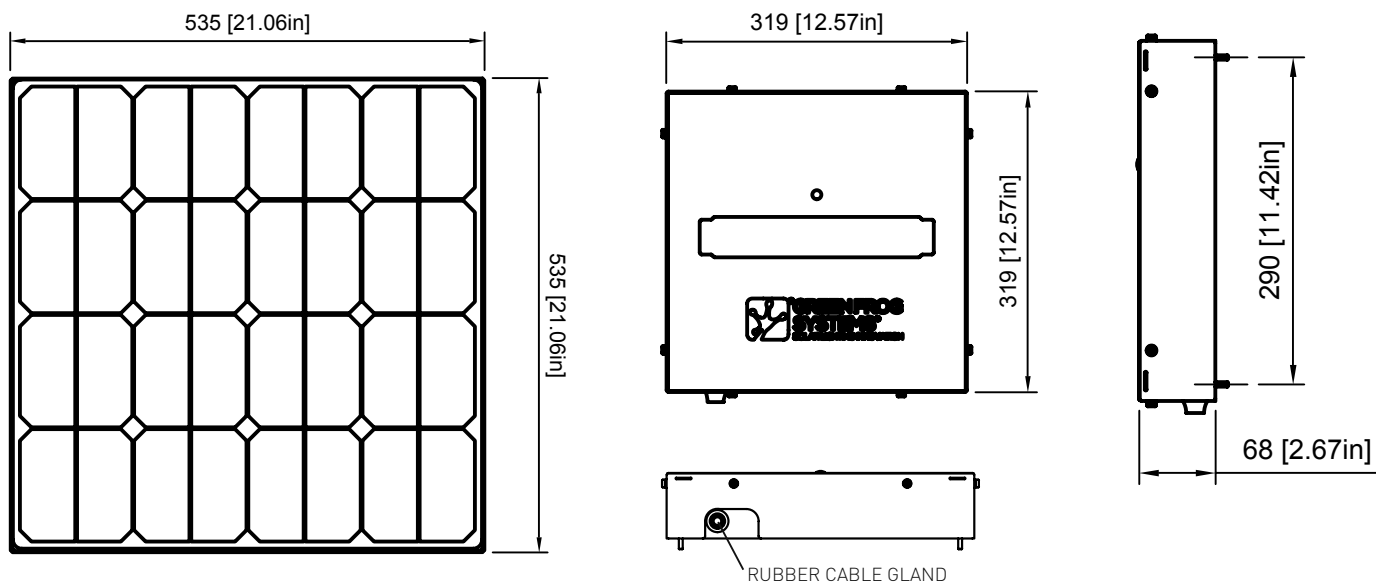
Operating Temp. Range	-20°C to 70°C / -4°F to 158°F
IP Rating	IP65
Impact Rating	IK10
Wind rating (up to)	318kmph / 198mph

WARRANTY

Warranty Period	10 years (Battery)* / 5 years (Unit) / 25 years (Solar Panel)
-----------------	---

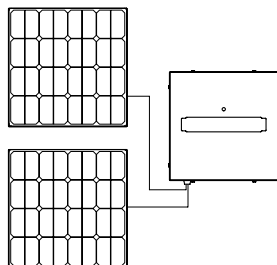
*Full warranty information is available at >> greenfrogsystems.com.au/warranty

PRODUCT DIMENSIONS

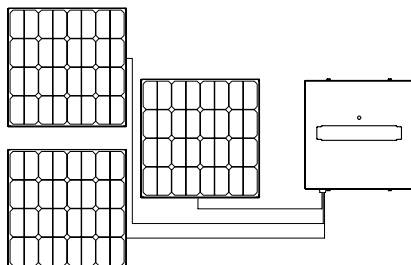


OTHER CONFIGURATIONS

TWIN



TRIPLE



QUAD

